

The Histopathologist's E.L.N.

- ❖ Secure and 21CFR11 Compliant
- ❖ Collaborative
- ❖ Integrated Image & File Apps
- ❖ Non-destructive Annotation
- ❖ Full Data & Metadata Management
- ❖ Semantic Search
- ❖ Compare revisions between versions of any file or image





Securely Interact with Specialized Apps

- ❖ Preview any file in any format from any application Inline

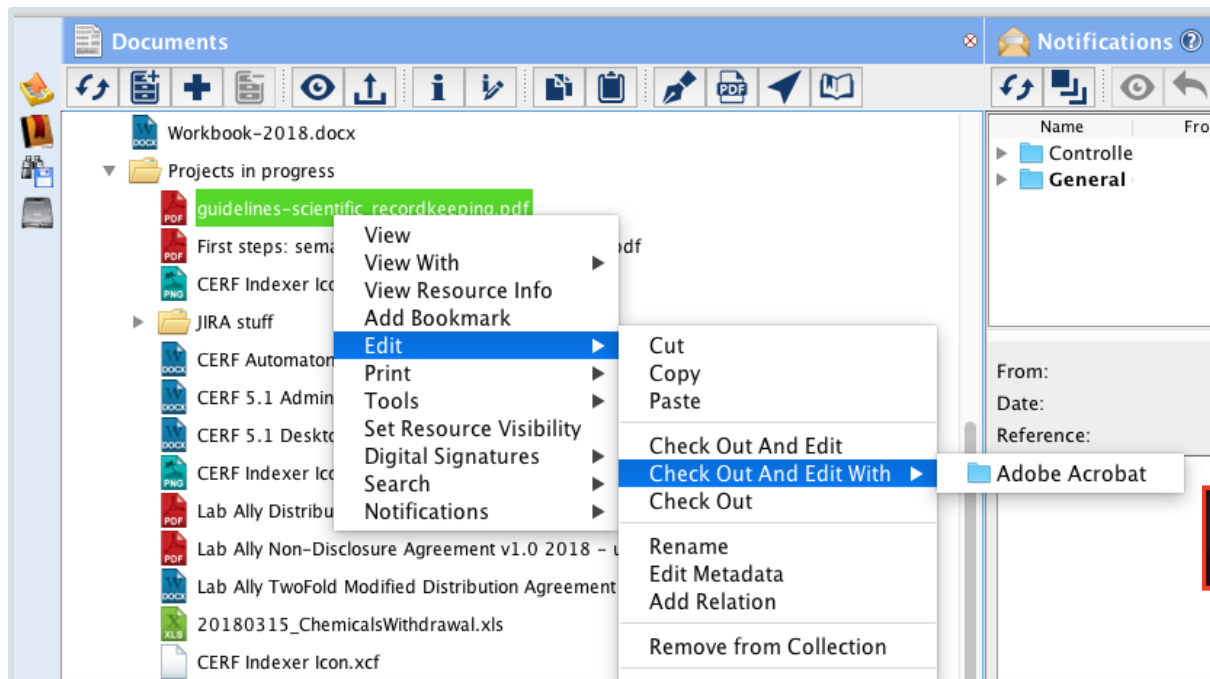
The screenshot illustrates the application's ability to preview various file formats. The top window shows a chemical structure of a complex molecule with a context menu open, highlighting options like 'Transform', 'Animation', 'Display Colors', and 'Misc'. The bottom window displays a file explorer interface with a list of files, including 'AF109308.gbk'. A 'Resource Info' dialog box is open for 'AF109308.gbk', providing details such as 'Title: AF109308.gbk', 'Description: see EMBL entry', 'Resource Type: Document', 'Creation Date: Jun 9, 2019 2:32:03 PM', 'Last Update: Jun 9, 2019 2:32:03 PM', 'Contributor: robert one', and 'File Size: 5203 Bytes'. An 'Edit Crossreference Link' dialog box is also open, showing 'Cross Reference Type: Databases' and 'ID: AF109308'.





Securely Interact with Specialized Apps

❖ Round-Trip Editing with your favorite applications



Qmol



ImageJ



Boxy Svg



Adobe



Microsoft



many others





- The screenshot displays the OpenSpecimen application's metadata form for a specimen. The form is titled 'Resource Info: Liver portal tract hepatitis B 10X RID.jpg'. The 'Thumbnail' section shows a small image of the specimen. The 'Metadata' section is divided into several tabs: General, Biomedical Imaging, Intellectual Property, Image, Resolution, Equipment, Location, and Submission/Modification. The 'General' tab is active, showing fields for Title, Anatomical Site, Pathology, and Developmental Stage. The 'Pathology' dropdown menu is open, showing a hierarchical list of conditions, with 'hepatitis B virus (HBV)' selected. The right sidebar shows a 'Thumbnail' section with a star rating and a 'Metadata' section with various fields like 'Source Type', 'Update Date', and 'Size'.

Field	Value
Title	Liver portal tract hepatitis B
Anatomical Site	liver {hepatocellular}
Pathology	hepatitis B virus (HBV)
Developmental Stage	61 years {61 year, 61 yr, age}
Source Type	Image
Update Date	Jun 9, 2019
Size	86666 Bytes
Per Sample	8 8 8
Height	494
Width	644
Status	Versionable
Contributor	Sue
File Size	316055 Bytes



A Forever Home for Your Data

❖ Best in Industry Search Engine

- multiple parameters + Boolean logic, export summaries

Documents

Search

Not Full Text contains liver OR hepatitis OR nash

Not Contributor is Rob One or Deb Suebu

Not Within File Cabinet is Lab-Ally Documents

Not Activity Status is Active

Not File Extension is .pptx

Not Creation Date after Mon 10/17/2016

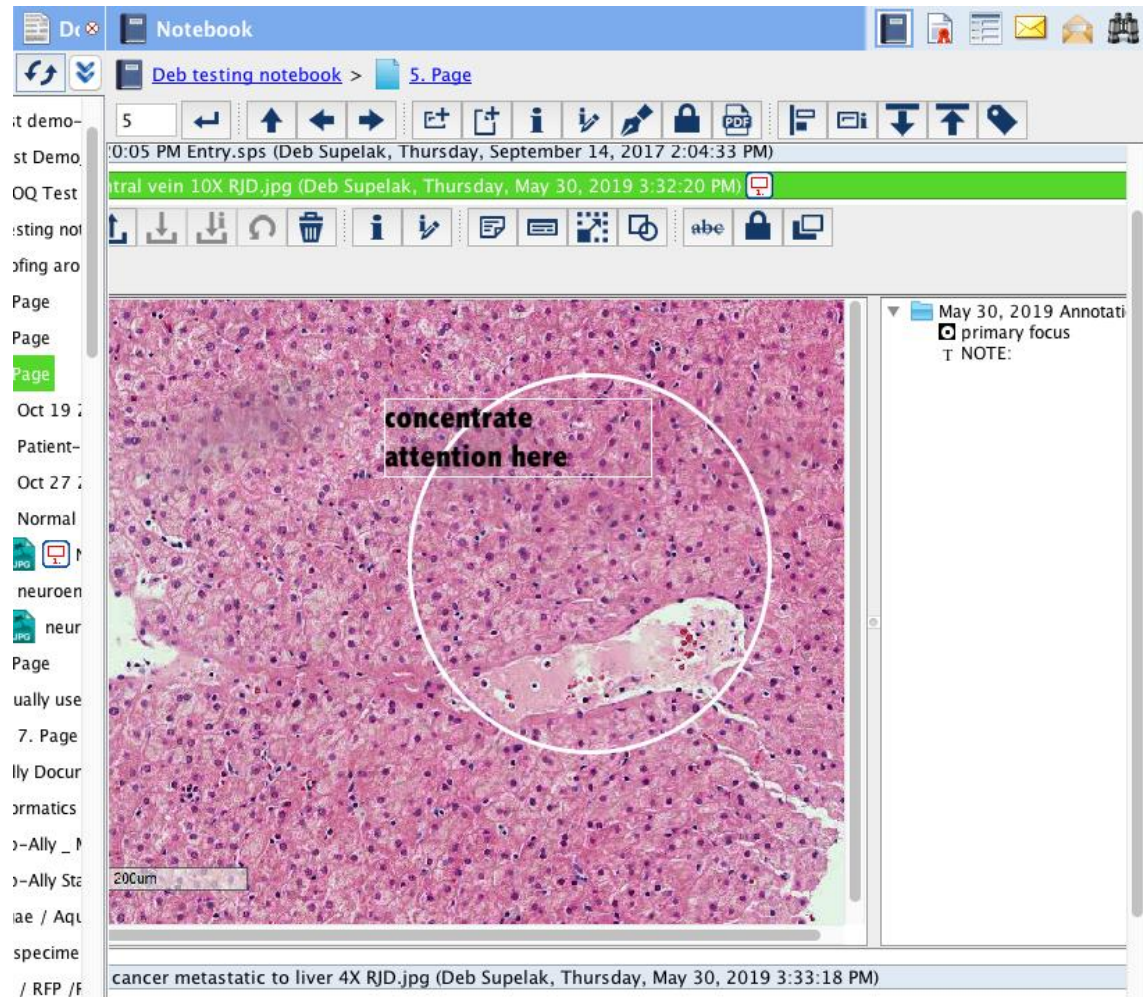
Add Search Parameter And

Showing 1 to 91 of 91 results.

Title	Contribu...	Creation Da	Content Type	Score
Fliver 515 Cl...	Deb Su.....	Oct 25, 201...	MSEExcel	2.1
NASH Article...	Deb Su.....	Apr 14, 201...	MSWord2007	1.7
BI nash-liver	Deb Su.....	Oct 25, 201...	MSEExcel	1.7
Liver cancer ...	Deb Su.....	Oct 4, 2016 7:5...	JPEG	1.6
Liver Cancer ...	Deb Su.....	Mar 21, 2016 5...	MSWord2007	1.4
Liver Cancer...	Deb Su.....	Mar 21, 2016 5...	MSWord2007	1.4
Parian 70 f...	Deb Su. . .	Oct 25, 2017 6...	MSEExcel2007	1.4
Liver portal t...	Deb Su.....	Jun 9, 2019 1:0...	Biomedical Image	1.4
Ovarian Canc...	Deb Su.....	Sep 28, 2016 2...	MSWord2007	1.0
Base cancer ...	Deb Su.....	Jun 21, 2018 5...	MSWord2007	1.0
SF- Indicatio...	Deb Su. . .	Nov 30, 2016 1...	MSWord2007	1.0
SF- Indicatio...	Deb Su. . .	May 7, 2018 11...	MSWord2007	1.0



Compliant, non-destructive, searchable image Annotation





Audit Trails & Version History

❖ True 21CFR11 Compliance

Edit Metadata

General

Title: virus lifecycle.png
Description:
Keywords:
Comment: Teaching virology 670
Category: visual aid

Submission/Modification

Resource Type: Image
Creation Date: Jun 7, 2019 2:00:02 PM
Last Update: Jun 7, 2019 2:00:02 PM
Contributor: robert one
File Size: 195110 Bytes

Image

Bits Per Sample: 8 8 8

Dimension

Add More Metadata Cancel Save Metadata

Info

Relations and Annotations

virus lifecycle.png
Is Source Resource For: robert one, 6/9/19 2:15 PM

Rating: ★★★★★

Thumbnail

Metadata

General

Title: virus lifecycle.png

Submission/Modification

Resource Type: Image
Creation Date: Jun 7, 2019 2:00:02 PM
Last Update: Jun 7, 2019 2:00:02 PM
Contributor: robert one
File Size: 195110 Bytes

Edit Metadata

Status

Edit Status: Version Controlled
Owner: robert1
My Role: Notebook Creator
Closed: No
Checked Out: Yes
By: robert one
Since: Jun 9, 2019 2:22:24 PM
Visibility: Shared
Id: 1619 (Federation: 43202, Server: 501)

Version History

Title	Versi...	Versi...	Com...	Cont...	Date
virus lif...	1.1	1.1	Started...	robert1	Jun 7, ...

Virus Lifecycle Diagram

The diagram illustrates the virus lifecycle within a cell. Key components and processes include:

- Chloro** (Chloroplast)
- Mito** (Mitochondrion)
- ER** (Endoplasmic Reticulum)
- Golgi**
- Nucleus**
- DNA + Proteins?**
- DNA Replication?**
- Late mRNAs**
- Late Proteins**
- Early mRNAs**
- Early Proteins**
- Protein Glycosylation?**
- Lipid Component?**
- DNA Replication?**
- Capsid Assembly**
- DNA Packaging**
- Cell Lysis**
- Virus attachment/uncoating**
- virus assembly center**



Collaborate securely

- ❖ Built-in notifications, 21CFR11 compliant signature and witness workflows for unrivaled data integrity assurance

The screenshot displays the Cerf-Notebook application interface. On the left is a 'Documents' pane with a tree view containing folders like 'safety expts', 'Versioning Tests', 'project X-Ray', and 'OQ Test Demo-Notebook Collection'. The main area is divided into three sections: a 'Notifications' pane at the top showing a list of documents with columns for Name, From, Date, and Reference; a central pane showing details for a 'Controlled Documents [explanation.pdf]' document, including its date (Sunday, May 26, 2019) and a reference to 'explanation.pdf'; and a right-hand 'Info' pane. The 'Info' pane shows contributor details for 'Rob J Day' and a 'Status' section with fields like 'Edit Status: Final', 'Owner: riday', and 'My Role: Notebook Creator'. Below the status is a 'Signatures' section with a 'Signing Context' dropdown set to 'xray1'. It shows a 'Submit' button and a digital signature of Rob J Day, dated Monday, July 13, 2015, 11:25:55 AM. Below this is a 'Witness' section with a digital signature of Rob One, dated Monday, July 13, 2015, 11:53:03 AM, with the text 'This is fine'.

